



7D
6N

东京 探险+ 双主题乐园

DISCOVER JAPAN + 2 THEME PARKS

东京 | 富士山 | 京都 | 大阪
TOKYO | MT FUJI | KYOTO | OSAKA



JPFTD07



1 吉隆坡 ✕ 羽田

于吉隆坡国际机场集合办理登记手续，然后乘搭飞机飞往日本。

📍 抵达羽田机场后，转运至机场酒店休息。

2 东京

📍 浅草寺

东京最古老的寺庙，也是必游热门景点。这座寺庙的标志是门前悬挂着的巨大“雷门”大灯笼。

📍 仲见世商店街

充满下町风情的街区，沿路商店售卖各种小吃与伴手礼，现烤仙贝店、浅草名物人形烧等等。

📍 原宿

日本年轻人的潮流圣地，是购物、娱乐和体验东京多元文化的好地方。表参道和青山则是成熟稳重人士的购物天堂，拥有高端时装精品店、创新设计公司 and 时尚咖啡馆。

📍 新宿

吃喝玩乐以及购物天堂，还有不夜城之称的歌舞伎町。

3 迪士尼乐园 - 140公里 - 山中湖温泉

📍 迪士尼乐园

在这大人小孩的梦幻国度里，它拥有7大主题公园。各种趣味无穷的游戏，全天候的表演，卡通人物盛装游行等新奇缤纷，欢乐无穷。

📍 山中湖温泉

我们将在最闻名且古老的温泉老区过夜。

4 富士山 - 179公里 - 滨松

📍 忍野八海

富士山数十年来不断融化的雪水渗透地层，形成了八个清泉组成的涌泉群。

季节限定

★富士山（4月01日 - 11月30日）

如果时间和天气允许，您可以登上富士山五合目。富士山海拔3,776米，是日本最高的山。

★富士山河口湖芝樱公园（4月20日 - 5月02日）

春季时分，富士山下就会呈现壮观的“粉红地毯”一整片渐层的粉红和富士山的景色，美不胜收。

★富士山全景缆车（12月01日 - 3月31日）

从河口湖东岸上升400米，到达天庄山山顶附近的观景台。从海拔1,000多米的观景台上，可以欣赏到下方湖泊和富士山的全景。

5 滨松 - 226公里 - 京都 - 46公里 - 大阪

📍 古典京都

穿梭“二年坂，三年坂”千年日式风情老街，有时候更可以遇见穿梭江户时代身穿和服的日本艺妓。

📍 清水寺

京都最古老的寺院，也是世界文化遗产。

季节限定

★圆山公园（3月20日 - 4月05日）

京都著名的赏樱名所，最受瞩目的是公园内那颗淡粉红的百年樱花树“枝垂樱”。

★平安神宫（4月06日 - 3月19日）

手工建造的百年神社，四季的风景各异。

📍 心斋桥

大阪最繁华的商业街。最著名的百货商店街，流行时尚街，风味美食街，还有道顿堀都集中在这里。

6 环球影城 - 46公里 - 关西

📍 环球影城

以好莱坞热门电影为主题，汇集世界娱乐的主题乐园，无论大人小孩都能尽情玩乐。

7 关西 ✕ 吉隆坡

今天，我们将乘搭当日班机返回家园。

※ 行程可能会以最终确定的航班而前后调动。



清水寺
Kiyomizu Temple

1 KUALA LUMPUR ✕ HANEDA

Assemble at Kuala Lumpur International Airport for departure flight to Japan.

📍 **Transfer to hotel for rest after arrival Haneda airport.**

2 TOKYO

📍 **Asakusa Temple**

Oldest Buddhist temple and a must-visit in Tokyo. The hallmark of this temple is the huge red lantern with a thunder gate carved on it.

📍 **Nakamise Street**

A neighborhood full of Shitamachi-style, shops along the road sell a variety of snacks and souvenirs, such as freshly grilled senbei shops and Asakusa famous Ningyoyaki and more.

📍 **Harajuku**

A trendy haven for Japanese youth, perfect for shopping, entertainment, and experiencing Tokyo's diverse culture. Omotesando and Aoyama are shopping paradises for mature and sophisticated individuals, featuring high-end fashion boutiques, innovative design firms, and stylish cafes.

📍 **Shinjuku**

There's no question that Tokyo is an ultimate shopper's paradise and Shinjuku is one of the best retail hubs.

3 TOKYO DISNEYLAND – 140km – YAMANAKAKO ONSEN

📍 **Tokyo Disneyland**

A world of magic and fantasy in Tokyo Disney Resort awaits you! Enjoy adventure rides, catch entertainment shows, meet your favourite character and gaze in awe at colorful parades.

📍 **Yamanakako Onsen**

Overnight in the most famous and oldest onsen hot spring in Shizuoka Prefecture.

4 MT. FUJI – 179km – HAMAMATSU

📍 **Oshino Hakkai**

Over the past decades, the melting snow from Mount Fuji has seeped into the earth's strata, forming a group of eight clear springs.

Seasonal Arrangement:

★ Mt. Fuji (01 Apr - 30 Nov)

If weather permits, proceed to Mt Fuji 5 station to enjoy the magnificent view of "UNKAI" in Japan's highest mountain.

★ Fujikawaguchiko Shibazakura Park (20 Apr - 02 May)

A shrine dedicated to Inari, the god of rice, sake & prosperity. It is one of Japan's most popular shrines with dozens of statues of foxes and thousands of vibrant orange "Tori".

★ The Mount Fuji Panoramic Ropeway (01 Dec - 31 Mar)

Ascends 400 meters from the eastern shore of Lake Kawaguchiko to an observation deck near the peak of Mount Tenjo. From the observation deck, which sits more than 1,000 meters above sea level, there are panoramic views of the lake below and Mount Fuji.

5 HAMAMATSU – 226km – KYOTO – 46km – OSAKA

📍 **Classical Kyoto**

Walk along "Ninenzaka", "Sannenzaka" a typical Japanese souvenir street where you might spot Geisha walking around the street.

📍 **Kiyomizu Temple**

One of the most celebrated temples in Japan and is listed in the UNESCO World Heritage Site.

Seasonal Arrangement:

★ Maruyama Park (20 Mar - 05 Apr)

The park is known for its beautiful garden with magnificent cherry blossoms in spring and maple leaves in autumn.

★ Heian Jingu Shrine (06 Apr - 19 Mar)

It has been 100 years since the shrine was built by human hands.

📍 **Shinsaibashi**

Shop at Osaka's busiest and largest shopping area, department store, fashion street, local snacks and **Dotonbori** are all here.

6 UNIVERSAL STUDIOS JAPAN – 46km – KANSAI

📍 **Universal Studios Japan**

Enjoy a universal of fun-filled excitement at the world-class theme park. It is enjoyable for both adults and children.

7 KANSAI ✕ KUALA LUMPUR

Proceed to airport for your flight back home.

※ Sequence of the itinerary is subject to change according to the final flight confirmation.





行程亮点 HIGHLIGHT

- 温泉体验
- 浅草寺
- 迪士尼乐园
- 富士山
- 清水寺

- 环球影城
- 原宿
- 新宿歌舞伎町
- 心斋桥

- Onsen Experience
- Asakusa Temple
- Tokyo Disneyland
- Mt. Fuji
- Kiyomizu Temple

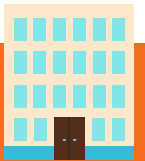
- Universal Studios Japan
- Harajuku
- Shinjuku Kabukicho
- Shinsaibashi



美食 GOURMET

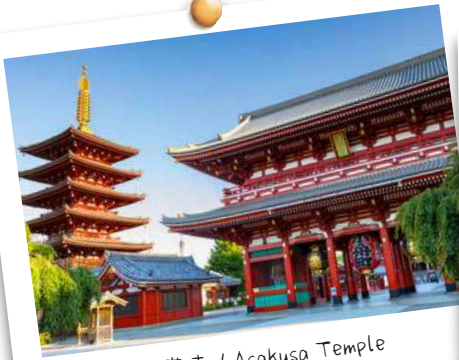
日式料理 / 迎宾聚餐 / 日式火锅 / 日式拉面 / 烧烤自助餐

Japanese Cuisine / Welcome Dinner / Japanese Hot Pot / Japanese Ramen / Bbq Buffet



酒店 HOTEL

			早餐 Breakfast	午餐 Lunch	晚餐 Dinner
D1	东京 (2 晚) Tokyo (2 Nights)	日航羽田商务酒店或同级 JAL City Haneda or similar	-	-	机上用餐 Meal on Board
D2		阪急第一酒店 Ours Inn Hankyu or similar	酒店 Hotel	✓	✓
D3	山中湖温泉 (1 晚) Yamanakako Onsen (1 Night)	太阳广场酒店或同级 Sun Plaza Yamanakako or similar	酒店 Hotel	✗	✓
D4	滨松 (1 晚) Hamamatsu (1 Night)	滨松协和酒店或同级 Hamamatsu Concorde Hotel or similar	酒店 Hotel	✓	✗
D5	大阪 (1 晚) Osaka (1 Night)	大阪广场酒店或同级 Osaka Plaza Hotel or similar	酒店 Hotel	✓	✓
D6	关西 (1 晚) Kansai (1 Night)	星际之门酒店或同级 Stargate Hotel Kansai or similar	酒店 Hotel	✗	✓
D7	-	-	机上用餐 Meal on Board	-	-



浅草寺 / Asakusa Temple



忍野八海 / Oshino Hakkai



新宿 / Shinjuku

旅行必备:

护照或签证 - 团员有责任确保护照有效期需至少6个月(从返程日期算起), 并且取得必要的签证和准证。
旅游保险 - 出发前, 建议您购买全面的旅游保险。

条规:

1. 行程、膳食、酒店住宿、交通和自费项目可能会有所更改, 恕不另行通知。
2. 若出现无法预测的特殊情况特别是在旅游旺季期间, UVSB将保留更改或取消行程的权利。
3. 若UVSB的宣传手册或任何传播媒介, 出现任何形式的印刷失误或遗漏, 本公司一概不负责, 并且保留更正的权利。
4. 每位参与UVSB团的成员, 必须为自身安全或行为负责。若出现无法预测的特殊情况 (例如: 交通延误/取消、疾病、天气、示威、战争等等), 因而引发额外支出的问题, UVSB一概不负责, 旅客需自行负责额外的费用。
5. 详情条规, 请参阅单张背面或浏览 <https://ubingo.my/home/terms.php>
6. 以上图片仅供参考, 请以实物为准。

备注: UVSB为UbinGO Vacations Sdn Bhd.

日本团 - 附加条规:

1. 所有行程以中文讲解为主。若有需要, 将提供简单的英语翻译。
2. 如预订三人间, 提供的额外床垫为滚动式折叠床。
3. 团费仅适用于大马公民, 外国公民则需缴付额外费用。

Travel Essentials:

Passport & Visas - Each tour member is responsible to ensure their passport is valid for at least six (6) months from the return date of the trip and all necessary visas and permits have been acquired.
Travel Insurance - It's essential that you take out comprehensive travel insurance before travel.

Terms & Conditions:

1. Itineraries, meals, hotels, transportation and optional tour are subject to change without prior notice
2. UVSB reserves the right to make changes to or cancel the itinerary at any time due to unforeseen circumstances, especially during peak periods or in the event of a force majeure.
3. UVSB is not responsible for omissions, printing and/or presentation errors in brochures or in any media where such information may be presented; UVSB reserves the right to make corrections as required.
4. Every person participating in UVSB's tours shall travel at his/her own risk. UVSB shall not be held liable to any person for additional expenses that may be incurred due to delays or changes in any transport services, sickness, weather, strikes, war or other causes.
5. For other terms & conditions, refer overleaf of invoice or visit <https://ubingo.my/home/terms.php>
6. All pictures shown are for illustration purpose only.

Note: UVSB refers to UbinGO Vacations Sdn Bhd.

Japan Tours - Additional Terms & Conditions:

1. Tours are conducted in Mandarin, with simple translation in English if required.
2. For booking triple-share rooms please note that additional bed is based on "roll-away" bed.
3. Tour fare quoted is for MALAYSIAN, the non-Malaysian surcharge applied.

Tentative Flight Details - Subject to Change

For Agent Use Only:

Updated Date: JUL 2024